



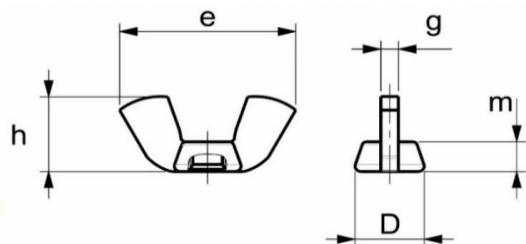
GAMMA[®]
OFFICINE MECCANICHE

WWW.GAMMAOM.COM

AGG DEL 02/2024

FASTENERS

WING NUTS COLD FORMED AMERICAN FORM (STANDARD)



BLANK	M	BSW BSF	UNC UNF		e	h	D	g	m
AA	M3	1/8	(5-40)	min.	17,70	8,20	7,40	1,80	2,80
	M4	5/32	6-32	max.	19,20	9,40	8,20	2,20	3,20
XA	M3			min.	20,00	9,00	8,30	2,30	3,80
	M4	5/32	6/32						
	M5	3/16	8/32	max.	22,00	10,20	9,30	2,70	4,20
A	M5	3/16	8/32-10/24	min.	21,00	9,90	9,00	2,40	3,80
		(7/32)	10-32	max.	23,00	11,10	10,00	2,80	4,20
AB	(M5E)	1/4 E	1/4 E	min.	24,00	11,60	10,00	2,80	4,00
	M6E			max.	26,00	12,80	11,00	3,20	4,60
B	M6	1/4	1/4	min.	25,80	12,30	11,40	2,80	4,60
		(M7)		max.	27,80	13,50	12,40	3,20	5,20
C	M8	5/16	5/16	min.	29,30	14,20	13,00	3,10	5,10
				max.	31,30	15,40	14,00	3,50	5,70
XC	M4/M5	1/4	1/4	min.	34,80	15,90	12,20	3,10	5,10
	M6/M8	5/16	5/16	max.	36,80	17,10	13,20	3,50	5,70
D	M10	3/8	3/8	min.	34,10	16,60	14,60	3,70	5,90
				max.	36,50	18,00	16,00	4,30	6,70
E	M12	7/16	7/16	min.	46,20	21,30	19,60	4,60	7,40
		1/2	1/2	max.	48,80	23,30	21,40	5,40	8,40
EE	M14	(9/16)	(9/16)	min.	63,30	29,30	24,00	6,00	10,00
	M16	5/8	5/8	max.	66,70	32,30	26,00	7,00	11,20
F	M18	3/4	3/4	min.	64,80	29,70	28,30	6,70	11,60
		M20		max.	68,20	32,70	30,30	7,70	12,80

MATERIALS

Steel (Fe) – Brass (OT 63) – Stainless Steel 304 – Stainless Steel 316 – Aluminium.

TREATMENT

Only on steel White galvanised - other treatments on request

TOLERANCES

Metric threads class 6G - Whitworth threads medium class - American Standard threads class 2B

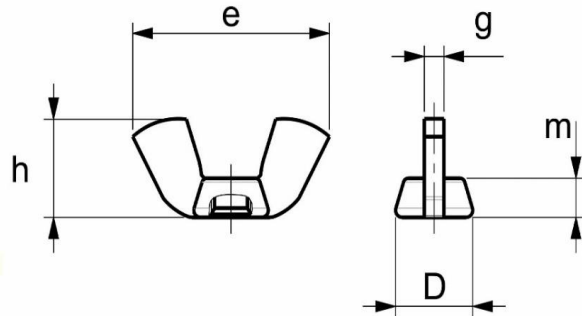
SIZE

Unquoted parts in this document are not binding. GAMMA Officine Meccaniche s.r.l reserves the possibility to change, modify or eliminate products or dimensions without prior notice.

NOTES

Different threading can be performed on the same blank. For example: blank "B" threads M4 or "E" threaded 5/16

WING NUTS COLD FORMED AMERICAN FORM (HEAVY AND LIGHT MODEL)



HEAVY model									
BLANK	M	BSW BSF	UNC UNF		e	h	D	g	m
A	M3 P	1/8	(5-40 P)	min.	21,00	9,90	9,00	2,40	3,80
	M4 P	5/32 P	6-32 P	max.	23,00	11,10	10,00	2,80	4,20
B	M5 P	3/16 P	10-24 P 10-32 P	min.	25,80	12,30	11,40	2,80	4,60
				max.	27,80	13,50	12,40	3,20	5,20
C	M6 P	1/4 P	1/4 P	min.	29,30	14,20	13,00	3,10	5,10
				max.	31,30	15,40	14,00	3,50	5,70
D	M8 P	5/16 P	5/16 P	min.	34,10	16,60	14,60	3,70	5,90
				max.	36,50	18,00	16,00	4,30	6,70
E	M10 P	3/8 P	3/8 P	min.	46,20	21,30	19,60	4,60	7,40
				max.	48,80	23,30	21,40	5,40	8,40
EE	M12 P	1/2 P	1/2 P	min.	63,30	29,30	24,00	6,00	10,00
				max.	66,70	32,30	26,00	7,00	11,20
F	M14 P M16 P	9/16 P 5/8 P	9/16 P 5/8 P	min.	64,80	29,70	28,30	6,70	11,60
				max.	68,20	32,70	30,30	7,70	12,80
LIGHT model									
BLANK	M	BSW BSF	UNC UNF		e	h	D	g	m
A	M6 L	1/4 L	1/4 L	min.	21,00	9,90	9,00	2,40	3,80
				max.	23,00	11,10	10,00	2,80	4,20
B	M8 L	5/16 L	5/16 L	min.	25,80	12,30	11,40	2,80	4,60
				max.	27,80	13,50	12,40	3,20	5,20
DE	M12 L	7/16 L 1/2 L	7/16 L 1/2 L	min.	40,70	19,50	18,20	3,80	6,00
				max.	43,30	21,50	19,80	4,60	7,00

MATERIALS

Steel (Fe) – Brass (OT 63) – Stainless Steel 304 – Stainless Steel 316 – Aluminium.

TREATMENT

Only on steel White galvanised - other treatments on request

TOLERANCES

Metric threads class 6G - Whitworth threads medium class - American Standard threads class 2B

SIZE

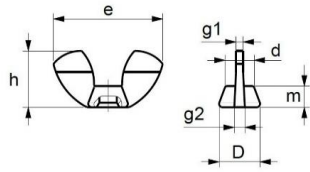
Unquoted parts in this document are not binding. GAMMA Officine Meccaniche s.r.l reserves the possibility to change, modify or eliminate products or dimensions without prior notice.

NOTES

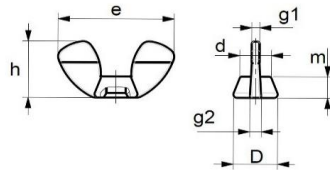
Different threading can be performed on the same blank. For example: blank "B" threaded M4 or "E" threaded 5/16

WING NUTS COLD FORMED GERMAN FORM (SIMILAR DIN 314 - SIMILAR DIN 315)

similar DIN 314



similar DIN 315



	M		e	h	D	d	g1	g2	m
	M4 P	min.	24,00	11,00	8,00	7,50	1,50	2,30	4,00
		max.	26,00	13,00	11,00	9,00	2,30	2,80	6,50
	M5	min.	24,00	11,00	8,00	7,50	1,50	2,30	4,00
		max.	26,00	13,00	11,00	9,00	2,30	2,80	6,50
	M6	min.	30,00	15,00	10,00	8,50	1,50	2,70	5,00
		max.	33,00	17,00	13,00	9,50	2,30	3,30	7,00
	M8	min.	35,00	18,00	13,00	9,20	2,00	4,70	6,50
		max.	38,00	20,00	16,00	10,80	2,80	5,30	7,50
	M10	min.	48,00	23,00	17,00	12,00	3,60	4,60	8,00
		max.	51,00	25,00	19,00	14,00	4,40	5,40	11,00

MATERIALS

Steel (Fe) - On Request: Brass (OT 63) – Stainless Steel 304 – Stainless Steel 316.

TREATMENT

Only on steel White galvanised - other treatments on request

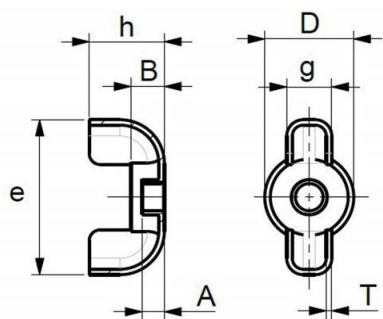
TOLERANCES

Metric threads class 6G

SIZE

Unquoted parts in this document are not binding. GAMMA Officine Meccaniche s.r.l reserves the possibility to change, modify or eliminate products or dimensions without prior notice.

STANDARD SHEET METAL WING NUTS



FORMAT	M	BSW	BSF	UNC UNF		e	h	D	g	B	T	A
7/8	M4	5/32		8-32	min.	22,00	9,00	10,80	4,50	3,50	0,65	2,00
					max.	23,00	9,50	11,20	5,00	4,00	0,85	3,00
7/8	M5	3/16		10-24 10-32	min.	22,00	9,00	10,80	4,50	3,50	0,65	2,00
					max.	23,00	9,50	11,20	5,00	4,00	0,85	3,00
7/8	M6	1/4		1/4	min.	22,00	9,00	10,80	4,50	3,50	0,65	2,00
					max.	23,00	9,50	11,20	5,00	4,00	0,85	3,00
1" 1/16	M8	5/16		5/16	min.	26,20	11,10	14,10	5,80	3,90	0,90	3,30
					max.	27,80	12,50	15,50	6,80	4,50	1,10	3,70

MATERIALS

Steel (Fe) - On request: Stainless Steel 304

TREATMENT

Only on steel White galvanised - other treatments on request

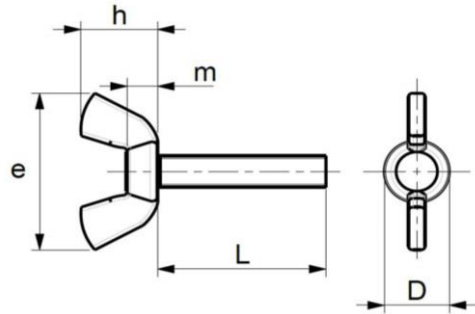
TOLERANCES

Metric threads class 6G - Whitworth threads medium class - American Standard threads class 2B

SIZE

Unquoted parts in this document are not binding. GAMMA Officine Meccaniche s.r.l reserves the possibility to change, modify or eliminate products or dimensions without prior notice.

WING SCREWS WITHOUT WASHER COLD FORMED AMERICAN FORM (STANDARD METRIC)



DIMENSIONS		M3	M4	M5	M6	M8	M10	M12
		min. - max.	min. - max.	min. - max.	min. - max.	min. - max.	min. - max.	min. - max.
HEAD	e	17.5 - 20.5	21.0 - 24.0	21.0 - 24.0	26.0 - 29.0	29.5 - 32.5	35.0 - 38.0	46.5 - 49.5
	h	7.8 - 9.8	9.5 - 11.5	9.5 - 11.5	12.0 - 14.0	13.8 - 15.8	16.5 - 18.5	21.0 - 24.0
	D	7.4 - 8.2	9.0 - 10.0	9.0 - 10.0	11.4 - 12.4	13.0 - 14.0	14.6 - 16.0	19.6 - 21.4
	m	2.8 - 3.2	3.8 - 4.2	3.8 - 4.2	4.6 - 5.2	5.1 - 5.7	5.9 - 6.7	19.6 - 21.4
SHANK	L	6.0 - 30.0	8.0 - 40.0	8.0 - 50.0	8.0 - 60.0	10.0 - 80.0	12.0 - 80.0	15.0 - 80.0

MATERIALS

Steel (Fe) – Brass (OT 63) – Stainless Steel 304 – Stainless Steel 316

TREATMENT

Only on steel White galvanised - other treatments on request

TOLERANCES

Metric thread class 6g

LENGHT L	< 30 mm	> 30 mm ≤ 80 mm	> 80 mm
	± 0.8 mm	± 1.5 mm	± 1.75 mm

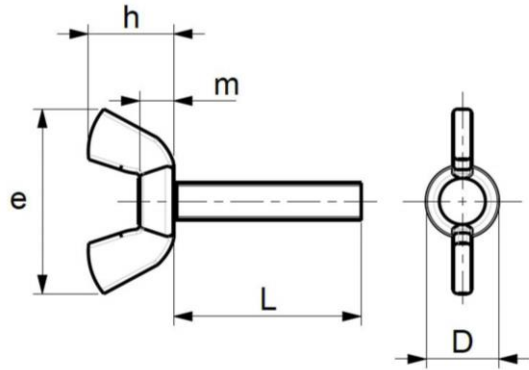
THREAD

On request: partial threading - lengths out of list.

SIZE

Unquoted parts in this document are not binding. GAMMA Officine Meccaniche s.r.l reserves the possibility to change, modify or eliminate products or dimensions without prior notice.

WING SCREWS WITHOUT WASHER COLD FORMED AMERICAN FORM (HEAVY METRIC MODEL)



DIMENSIONS		M5 P	M6 P	M8 P	M10 P
		min - max	min - max	min - max	min - max
HEAD	e	26.0 - 29.0	29.5 - 32.5	35.0 - 38.0	46.5 - 49.5
	h	12.0 - 14.0	13.8 - 15.8	16.5 - 18.5	21.0 - 24.0
	D	11.4 - 12.4	13.0 - 14.0	14.6 - 16.0	19.6 - 21.4
	m	4.6 - 5.2	5.1 - 5.7	5.9 - 6.7	7.4 - 8.4
SHANK	L	10.0 - 50.0	10.0 - 60.0	12.0 - 80.0	15.0 - 80.0

MATERIALS

Steel (Fe) – Brass (OT 63) – Stainless Steel 304 – Stainless Steel 316

TREATMENT

Only on steel White galvanised - other treatments on request

TOLERANCES

Metric thread class 6g

LENGHT L	< 30 mm	> 30 mm ≤ 80 mm	> 80 mm
	± 0.8 mm	±1.5 mm	± 1.75 mm

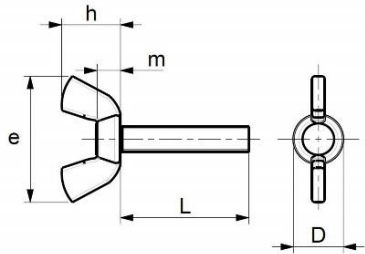
THREAD

On request: partial threading - lengths out of list.

SIZE

Unquoted parts in this document are not binding. GAMMA Officine Meccaniche s.r.l reserves the possibility to change, modify or eliminate products or dimensions without prior notice.

WING SCREWS WITHOUT WASHER COLD FORMED AMERICAN FORM (STANDARD INCH)



DIMENSIONS		8/32	10/24	1/4	5/16	3/8
		min - max	min - max	min - max	min - max	min - max
HEAD	e	0.82 - 0.95	0.82 - 0.95	1.02 - 1.14	1.16 - 1.28	1.37 - 1.49
	h	0.37 - 0.45	0.37 - 0.45	0.47 - 0.55	0.54 - 0.62	0.65 - 0.73
	D	0.35 - 0.39	0.35 - 0.39	0.44 - 0.49	0.51 - 0.55	0.57 - 0.63
	m	0.15 - 0.17	0.15 - 0.17	0.18 - 0.21	0.20 - 0.22	0.23 - 0.26
SHANK	L	3/8" - 1" 1/2	3/8" - 1" 1/2	3/8" - 2"	1/2" - 3"	1/2" - 3"

MATERIALS

Steel (Fe) – Brass (OT 63) – Stainless Steel 304 – Stainless Steel 316

TREATMENT

Only on steel White galvanised - other treatments on request

TOLERANCES

UNC - UNF thread class 2A

LENGHT L	$\leq 1" 1/4$	$> 1" 1/4 \leq 3"$	$> 3"$
		$\pm 0.03"$	$\pm 0.06"$

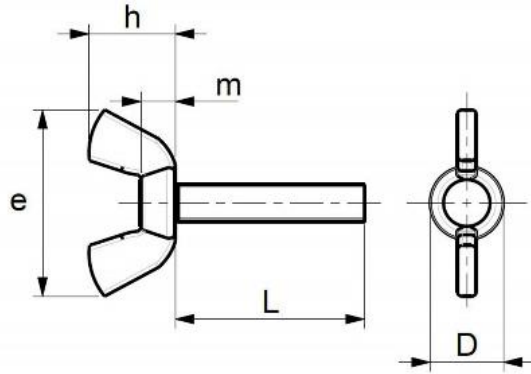
THREAD

On request: partial threading - lengths out of list.

SIZE

Unquoted parts in this document are not binding. GAMMA Officine Meccaniche s.r.l reserves the possibility to change, modify or eliminate products or dimensions without prior notice.

WING SCREWS WITHOUT WASHER COLD FORMED AMERICAN FORM (HEAVY MODEL INCH)



DIMENSIONS		10/24 P	1/4 P	5/16 P	3/8 P
		min - max	min - max	min - max	min - max
HEAD	e	1.02 - 1.14	1.16 - 1.28	1.37 - 1.49	1.83 - 1.95
	h	0.47 - 0.55	0.54 - 0.62	0.65 - 0.73	0.82 - 0.95
	D	0.44 - 0.49	0.51 - 0.55	0.57 - 0.63	0.77 - 0.84
	m	0.18 - 0.21	0.20 - 0.22	0.23 - 0.26	0.29 - 0.33
SHANK	L	3/8" - 2"	3/8" - 2" 1/2	3/8" - 3"	5/8" - 3"

MATERIALS

Steel (Fe) – Brass (OT 63) – Stainless Steel 304 – Stainless Steel 316

TREATMENT

Only on steel White galvanised - other treatments on request

TOLERANCES

UNC - UNF thread class 2A

LENGHT L	$\leq 1" \frac{1}{4}$	$> 1" \frac{1}{4} \leq 3"$	$> 3"$
		$\pm 0.03"$	$\pm 0.06"$

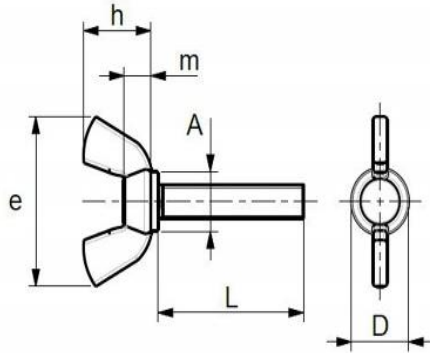
THREAD

On request: partial threading - lengths out of list.

SIZE

Unquoted parts in this document are not binding. GAMMA Officine Meccaniche s.r.l reserves the possibility to change, modify or eliminate products or dimensions without prior notice.

WING SCREWS WITH WASHER COLD FORMED AMERICAN FORM (STANDARD METRIC)



DIMENSIONS		M4	M5	M6	M8	M10	M12
		on request	on request				
		min. - max.	min. - max.	min. - max.	min. - max.	min. - max.	min. - max.
HEAD	e	21.0 - 24.0	21.0 - 24.0	26.0 - 29.0	29.5 - 32.5	35.0 - 38.0	46.5 - 49.5
	h	9.5 - 11.5	9.5 - 11.5	12.0 - 14.0	13.8 - 15.8	16.5 - 18.5	21.0 - 24.0
	D	9.0 - 10.0	9.0 - 10.0	11.4 - 12.4	13.0 - 14.0	14.6 - 16.0	19.6 - 21.4
	m	3.8 - 4.2	3.8 - 4.2	4.6 - 5.2	5.1 - 5.7	5.9 - 6.7	19.6 - 21.4
	A	7.0	8.0	10.5	12.0	14.0	18.0
SHANK	L	8.0 - 40.0	8.0 - 50.0	8.0 - 60.0	10.0 - 80.0	12.0 - 80.0	15.0 - 80.0

MATERIALS

Steel (Fe) – Brass (OT 63) – Stainless Steel 304 – Stainless Steel 316

TREATMENT

Only on steel White galvanised - other treatments on request

TOLERANCES

Metric thread class 6g

LENGHT L

< 30 mm

± 0.8 mm

> 30 mm ≤ 80 mm

±1.5 mm

> 80 mm

± 1.75 mm

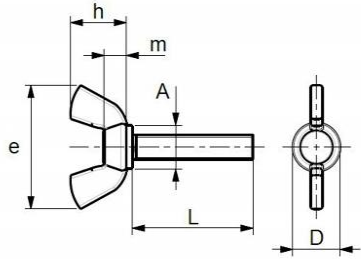
THREAD

On request: partial threading - lengths out of list.

SIZE

Unquoted parts in this document are not binding. GAMMA Officine Meccaniche s.r.l reserves the possibility to change, modify or eliminate products or dimensions without prior notice.

WING SCREWS WITH WASHER COLD FORMED AMERICAN FORM (STANDARD INCH)



DIMENSIONS		8/32	10/24	1/4	5/16	3/8	1/2
		on request	on request				
		min. - max.	min. - max.	min. - max.	min. - max.	min. - max.	min. - max.
HEAD	e	0.82 - 0.95	0.82 - 0.95	1.02 - 1.14	1.16 - 1.28	1.37 - 1.49	1.83 - 1.95
	h	0.37 - 0.45	0.37 - 0.45	0.47 - 0.55	0.54 - 0.62	0.65 - 0.73	0.82 - 0.95
	D	0.35 - 0.39	0.35 - 0.39	0.44 - 0.49	0.51 - 0.55	0.57 - 0.63	0.77 - 0.84
	m	0.15 - 0.17	0.15 - 0.17	0.18 - 0.21	0.20 - 0.22	0.23 - 0.26	0.29 - 0.33
	A	0.27	0.31	0.41	0.47	0.55	0.70
SHANK	L	3/8" - 1" 1/2	3/8" - 1" 1/2	3/8" - 2"	1/2" - 3"	1/2" - 3"	5/8" - 3"

MATERIALS

Steel (Fe) – Brass (OT 63) – Stainless Steel 304 – Stainless Steel 316

TREATMENT

Only on steel White galvanised - other treatments on request

TOLERANCES

UNC - UNF thread class 2A

LENGTH L

$\leq 1" 1/4$
 $\pm 0.03"$

$> 1" 1/4 \leq 3"$
 $\pm 0.06"$

$> 3"$
 $\pm 0.07"$

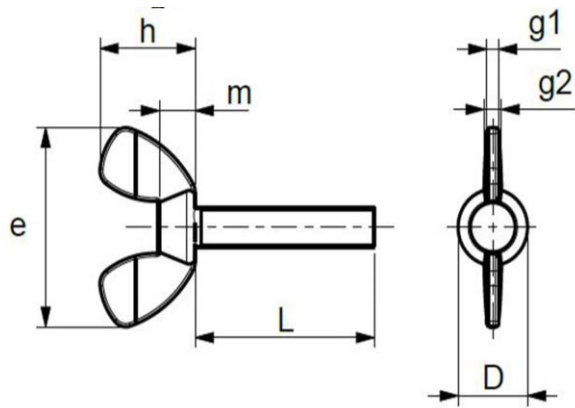
THREAD

On request: partial threading - lengths out of list.

SIZE

Unquoted parts in this document are not binding. GAMMA Officine Meccaniche s.r.l reserves the possibility to change, modify or eliminate products or dimensions without prior notice.

WING SCREWS COLD FORMED GERMAN TYPE (SIMILAR DIN 316)



DIMENSIONS		M4P	M5	M6	M8	M10
		min. - max.	min. - max.	min. - max.	min. - max.	min. - max.
HEAD	e	24.0 - 26.0	24.0 - 26.0	30.0 - 33.0	35.0 - 38.0	48.0 - 51.0
	h	11.0 - 13.0	11.0 - 13.0	15.0 - 17.0	18.0 - 20.0	23.0 - 25.0
	D	8.0 - 11.0	8.0 - 11.0	10.0 - 13.0	13.0 - 16.0	17.0 - 19.0
	m	4.0 - 6.5	4.0 - 6.5	5.0 - 7.0	6.5 - 7.5	8.0 - 11.0
	g1	1.5 - 2.3	1.5 - 2.3	1.5 - 2.3	2.0 - 2.8	3.6 - 4.4
	g2	2.3 - 2.8	2.3 - 2.8	2.7 - 3.3	4.7 - 5.3	4.6 - 5.4
SHANK	L	10.0 - 50.0	10.0 - 60.0	10.0 - 80.0	12.0 - 80.0	15.0 - 80.0

MATERIALS

Steel (Fe) – Brass (OT 63) – Stainless Steel 304 – Stainless Steel 316

TREATMENT

Only on steel White galvanised - other treatments on request

TOLERANCES

Metric thread class 6g

LENGHT L	< 30 mm	> 30 mm ≤ 80 mm	> 80 mm
		± 0.8 mm	± 1.5 mm

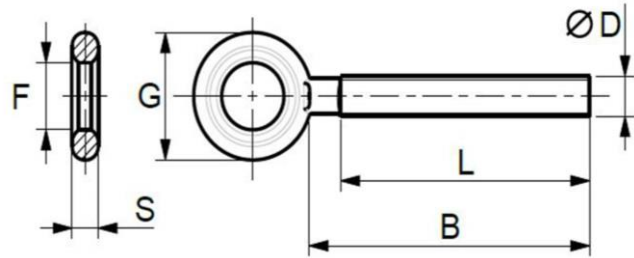
THREAD

On request: partial threading - lengths out of list.

SIZE

Unquoted parts in this document are not binding. GAMMA Officine Meccaniche s.r.l reserves the possibility to change, modify or eliminate products or dimensions without prior notice.

EYEBOLTS COLD FORMED - STEEL STANDARD METRIC



Ø D x B	L	G	F	S	KG/1000 pc
		min. - max.	min. - max.	min. - max.	
M5X45	40	15.3 - 16.7	8.05 - 8.55	3.2 - 3.8	8.3
M5X50	48	15.3 - 16.7	8.05 - 8.55	3.2 - 3.8	8.9
M6X45	40	18.3 - 19.7	9.75 - 10.25	3.9 - 4.5	12.9
M6X55	50	18.3 - 19.7	9.75 - 10.25	3.9 - 4.5	14.5
M6X60	55	18.3 - 19.7	9.75 - 10.25	3.9 - 4.5	15.4
M8X57	52	21.8 - 23.2	10.75 - 11.25	4.9 - 5.5	27.0
M8X65	60	21.8 - 23.2	11.55 - 12.05	4.9 - 5.5	29.6
M10X68	60	26.0 - 28.0	14.25 - 14.75	6.15 - 6.85	52.0
M10X81	73	26.0 - 28.0	14.25 - 14.75	6.15 - 6.85	58.0
M10X101	93	26.0 - 28.0	14.25 - 14.75	6.15 - 6.85	67.7
M11X73	65	28.0 - 30.0	14.75 - 15.25	6.95 - 7.65	68.3
M12X74	66	32.5 - 34.5	16.75 - 17.25	8.15 - 8.85	86.6
M12X98	90	32.5 - 34.5	16.75 - 17.25	8.15 - 8.85	103.6
M14X93	85	34.5 - 36.5	17.75 - 18.25	8.3 - 9.1	128.5

MATERIALS

Steel (Fe)

TREATMENT

White galvanised

TOLERANCES

Metric threads class 6g (right and left) Length L: +2 pitch

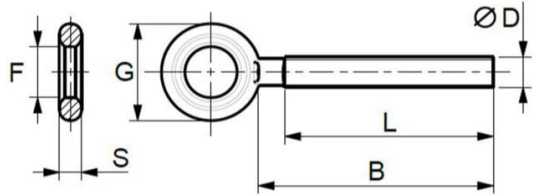
THREAD

On request: partial threading - lengths out of list.

SIZE

Unquoted parts in this document are not binding. GAMMA Officine Meccaniche s.r.l reserves the possibility to change, modify or eliminate products or dimensions without prior notice.

EYEBOLTS HOT FORMED - STEEL STANDARD METRIC



Ø D	L	B	G	F	S	KG/1000 pc
			min. - max.	min. - max.	min. - max.	
M16	95	110	46.5 - 49.5	22.5 - 24.5	11.7 - 13.3	255
M16	110	125	46.5 - 49.5	22.5 - 24.5	11.7 - 13.3	274
M18	100	117	49.5 - 52.5	24.0 - 26.0	12.7 - 14.3	317
M20	110	130	55.5 - 58.5	25.0 - 27.0	14.7 - 16.3	449
M22	120	140	63.5 - 66.5	29.0 - 31.0	16.7 - 18.3	635
M24	135	145	68.5 - 71.5	33.0 - 35.0	18.2 - 19.8	770
M27	150	160	74.0 - 78.0	37.0 - 39.0	19.2 - 20.8	1026
M30	150	170	86.0 - 90.0	41.0 - 43.0	24.7 - 26.3	1516
M33	150	170	86.0 - 90.0	41.0 - 43.0	24.7 - 26.3	1722

MATERIALS

Steel (Fe)

TREATMENT

White galvanised

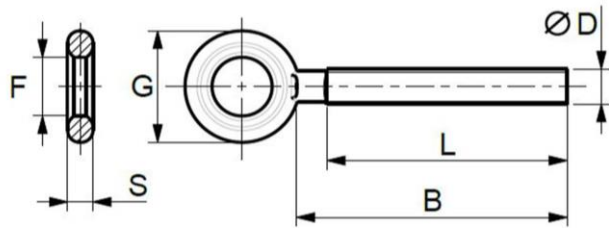
TOLERANCES

Metric threads class 6g (right and left) Length L: +2 pitch

SIZE

Unquoted parts in this document are not binding. GAMMA Officine Meccaniche s.r.l reserves the possibility to change, modify or eliminate products or dimensions without prior notice.

EYEBOLTS HOT FORMED - STAINLESS STEEL STANDARD METRIC



Ø D	L	B	G	F	S	KG/1000 pc
			min. - max.	min. - max.	min. - max.	
M6	50	55.5	19.2 - 20.8	9.7 - 10.3	5.2 - 5.8	17.0
M6	55	60.5	19.2 - 20.8	9.7 - 10.3	5.2 - 5.8	17.9
M6	60	65.5	19.2 - 20.8	9.7 - 10.3	5.2 - 5.8	18.8
M8	55	61.5	21.2 - 22.8	10.7 - 11.3	6.0 - 6.6	30.6
M8	60	66.5	21.2 - 22.8	10.7 - 11.3	6.0 - 6.6	32.2
M8	65	71.5	21.2 - 22.8	10.7 - 11.3	6.0 - 6.6	33.8
M10	60	67.0	30.0 - 32.0	13.6 - 14.4	8.2 - 9.0	65.7
M10	73	80.0	30.0 - 32.0	13.6 - 14.4	8.2 - 9.0	72.0
M12	66	73.5	34.0 - 36.0	15.6 - 16.4	8.6 - 9.4	93.7
M12	90	97.5	34.0 - 36.0	15.6 - 16.4	8.6 - 9.4	110.8

MATERIALS

Stainless steel 304 - Stainless steel 316

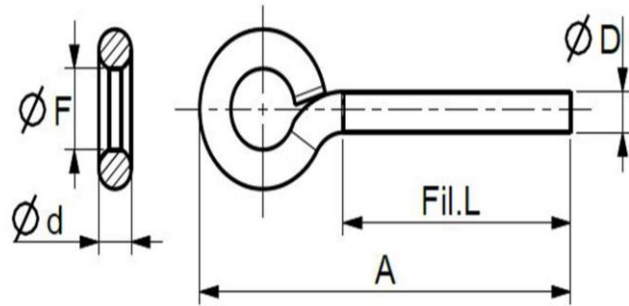
TOLERANCES

Metric threads class 6g (right and left) Length L: +2 pitch

SIZE

Unquoted parts in this document are not binding. GAMMA Officine Meccaniche s.r.l reserves the possibility to change, modify or eliminate products or dimensions without prior notice.

EYEBOLTS BENT WIRE - STEEL STANDARD METRIC



Ø D	L	A	Ø d	F	KG/1000 pc
M6	55	78,0	5,25	10,0	17,90
M8	65	96,5	7,10	13,0	41,20
M10	80	115,0	8,90	14,0	75,50
M12	85	135,0	10,70	22,0	132,20

MATERIALS

Steel (Fe)

TREATMENT

White galvanised

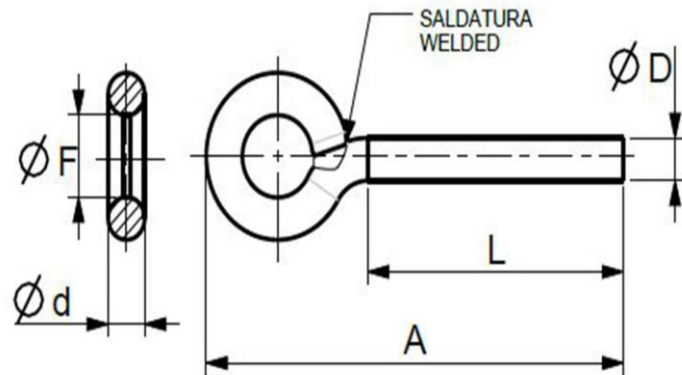
TOLERANCES

Metric threads class 6g (on request left thread) Length L: +2 pitch

SIZE

Unquoted parts in this document are not binding. GAMMA Officine Meccaniche s.r.l reserves the possibility to change, modify or eliminate products or dimensions without prior notice.

EYEBOLTS BENT WIRE WELDED STAINLESS STEEL - STANDARD METRIC



Ø D	L	A	Ø d	F	KG/1000 pc
				min. - max.	
M6	50	75.0	5.25	9.75 - 10.25	17.7
M6	55	80.0	5.25	9.75 - 10.25	18.6
M6	60	85.0	5.25	9.75 - 10.25	19.4
M8	55	83.0	7.10	10.75 - 11.25	36.3
M8	60	88.0	7.10	10.75 - 11.25	37.8
M8	65	93.0	7.10	10.75 - 11.25	39.3

MATERIALS

Stainless steel 304 - Stainless steel 316

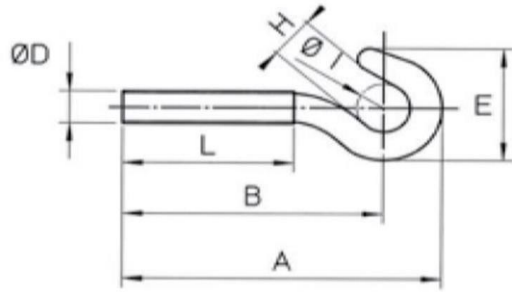
TOLERANCES

Metric threads class 6g Length L: +2 pitch

SIZE

Unquoted parts in this document are not binding. GAMMA Officine Meccaniche s.r.l reserves the possibility to change, modify or eliminate products or dimensions without prior notice.

HOOKS COLD FORMED - STEEL STANDARD METRIC



Ø D	L	A	B	E	H	Ø I	Kg/1000 pc
M 5	40	62,00	53,60	17,50	6,00	7,5	8,4
M 5	48	71,50	63,00	17,50	6,00	7,5	9,6
M 6	40	67,00	55,50	22,50	8,00	9,5	13,8
M 6	50	77,00	65,50	22,50	8,00	9,5	15,4
M 6	55	82,00	70,50	22,50	8,00	9,5	16,2
M 8	52	90,00	75,50	30,00	10,00	11,0	33,0
M 8	60	98,00	83,50	30,00	10,00	11,0	36,0
M 10	60	103,50	87,50	36,00	12,50	14,0	60,0
M 10	73	116,50	100,50	36,00	12,50	14,0	67,0
M 11	65	113,00	94,50	36,50	12,50	14,0	80,0
M 12	66	122,00	101,50	47,00	16,00	18,0	109,0
M 12	90	146,00	125,50	47,00	16,00	18,0	124,5
M 14	82	144,00	120,50	48,00	16,00	17,0	172,0

MATERIALS

Steel (Fe)

TREATMENT

White galvanised

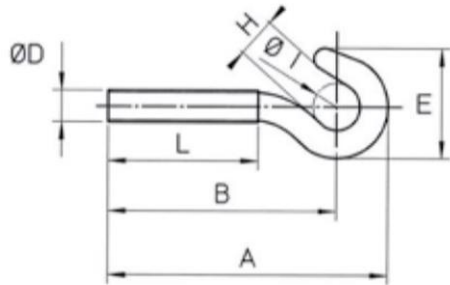
TOLERANCES

Metric threads class 6g (right and left) Length L: +2 pitch

SIZE

Unquoted parts in this document are not binding. GAMMA Officine Meccaniche s.r.l reserves the possibility to change, modify or eliminate products or dimensions without prior notice.

HOOKS COLD FORMED - STAINLESS STEEL STANDARD METRIC



Ø D	L	A	B	E	H	Ø I	Kg/1000 pc
M 6	50	77	65,5	22,5	8	9,5	15,4
M 6	55	82	70,5	22,5	8	9,5	16,2
M 8	55	93	78,5	30	10	11	33,9
M 8	60	98	83,5	30	10	11	36
M 10	60	103,5	87,5	36	12,5	14	60
M 10	73	116,5	100,5	36	12,5	14	67
M 12	66	122	101,5	47	16	18	109
M 12	90	146	125,5	47	16	18	124,5

MATERIALS

Stainless steel 304 - Stainless steel 316

TOLERANCES

Metric threads class 6g (on request left thread) Length L: +2 pitch

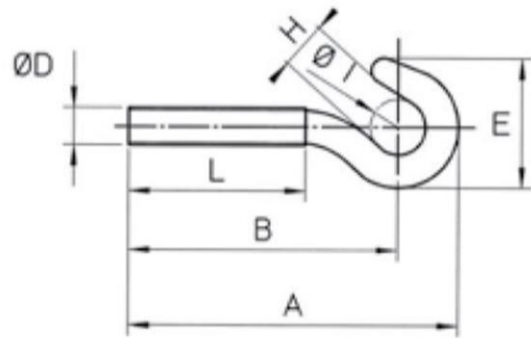
THREAD

On request: partial threading - lengths out of list.

SIZE

Unquoted parts in this document are not binding. GAMMA Officine Meccaniche s.r.l reserves the possibility to change, modify or eliminate products or dimensions without prior notice.

HOOKS HOT FORMED - STEEL STANDARD METRIC



Ø D	L	B	E	H	Ø I	Kg/1000 pc
M 16	95	140,0	58,0	19,0	20,0	262
M 16	110	150,0	58,0	19,0	20,0	276
M 18	100	154,5	61,0	20,0	21,0	364
M 20	110	175,0	90,0	20,0	21,0	499
M 22	120	193,0	100,0	23,0	24,0	790
M 24	135	202,0	100,0	25,0	26,0	1060
M 27	150	220,0	100,0	28,0	30,0	1255
M 30	150	210,0	106,0	30,0	33,0	1445
M 33	150	215,0	106,0	30,0	33,0	1821

MATERIALS

Steel (Fe)

TREATMENT

White galvanised

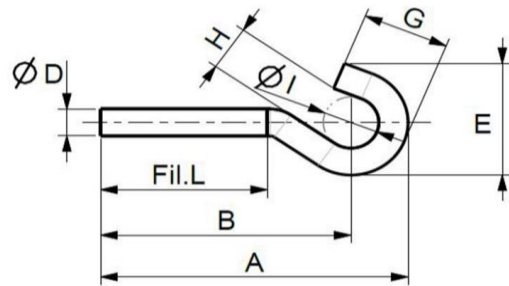
TOLERANCES

Metric threads class 6g (right and left) Length L: +2 pitch

SIZE

Unquoted parts in this document are not binding. GAMMA Officine Meccaniche s.r.l reserves the possibility to change, modify or eliminate products or dimensions without prior notice.

HOOKS BENT WIRE - STEEL STANDARD METRIC



Ø D	L	A	B	E	G	H	Ø I	Kg/1000 pc
M 6	55	80,0	70,2	22,6	18,0	8,1	10,0	17,50
M 8	60	99,0	85,0	30,3	23,5	8,8	14,0	39,00
M 10	73	120,0	104,0	36,1	28,5	12,0	15,0	71,30
M 12	90	137,0	116,5	46,8	37,0	16,7	21,0	124,50

MATERIALS

Steel (Fe)

TREATMENT

White galvanised

TOLERANCES

Metric threads class 6g (on request left thread) Length L: +2 pitch

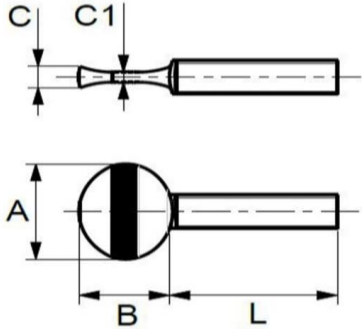
THREAD

On request: partial threading - lengths out of list.

SIZE

Unquoted parts in this document are not binding. GAMMA Officine Meccaniche s.r.l reserves the possibility to change, modify or eliminate products or dimensions without prior notice.

THUMB SCREWS COLD FORMED METRIC - STEEL



DIMENSIONS		M4	M5	M6	M8	M10	M12L
		min. - max.	min. - max.	min. - max.	min. - max.	min. - max.	min. - max.
HEAD	A	10.90 - 11.50	13.5 - 14.5	16.0 - 17.0	21.5 - 22.5	25.4 - 26.6	25.4 - 26.6
	B	7.35 - 8.15	10.45 - 11.25	13.5 - 14.5	16.5 - 17.5	18.5 - 19.5	18.5 - 19.5
	C	2.35 - 2.95	2.80 - 3.40	3.8 - 4.4	4.45 - 5.05	5.7 - 6.3	5.7 - 6.3
	C1	1.1 - 1.5	1.25 - 1.75	1.55 - 2.05	2.0 - 2.5	2.55 - 3.05	2.55 - 3.05
SHANK	L	10.0 - 30.0	10.0 - 40.0	10.0 - 50.0	12.0 - 70.0	15.0 - 80.0	15.0 - 80.0

MATERIALS

Steel (Fe) – Brass (OT 63)

TREATMENT

Only on steel White galvanised - other treatments on request

TOLERANCES

Metric thread class 6g

LENGHT L

< 30 mm
± 0.8 mm

> 30 mm ≤ 80 mm
± 1.5 mm

> 80 mm
± 1.75 mm

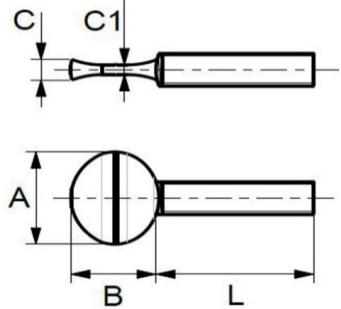
THREAD

On request: partial threading

SIZE

Unquoted parts in this document are not binding. GAMMA Officine Meccaniche s.r.l reserves the possibility to change, modify or eliminate products or dimensions without prior notice.

THUMB SCREWS COLD FORMED METRIC - STAINLESS STEEL304



DIMENSIONS		M4	M5	M6	M8	M10
		min. - max.	min. - max.	min. - max.	min. - max.	min. - max.
HEAD	A	11.50 - 13.50	14.0 - 16.0	17.5 - 19.5	22.0 - 24.0	27.0 - 29.0
	B	7.8 - 9.2	11.3 - 12.7	13.3 - 14.7	17.0 - 19.0	20.5 - 22.5
	C	1.6 - 2.2	1.9 - 2.5	2.7 - 3.3	4.1 - 4.9	4.6 - 5.4
	C1	1.2 - 1.6	1.4 - 2.0	1.5 - 2.1	2.4 - 3.0	2.5 - 3.1
SHANK	L	10.0 - 30.0	10.0 - 40.0	10.0 - 50.0	12.0 - 70.0	15.0 - 80.0

MATERIALS

Stainless Steel 304

TOLERANCES

Metric thread class 6g

LENGHT L

< 30 mm
± 0.8 mm

> 30 mm ≤ 80 mm
± 1.5 mm

> 80 mm
± 1.75 mm

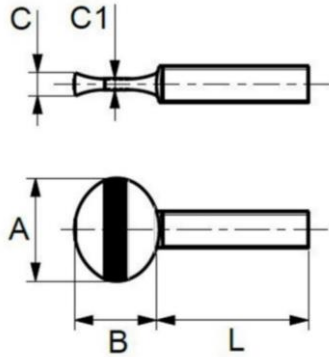
THREAD

On request: partial threading

SIZE

Unquoted parts in this document are not binding. GAMMA Officine Meccaniche s.r.l reserves the possibility to change, modify or eliminate products or dimensions without prior notice.

THUMB SCREWS COLD FORMED INCH - STEEL



DIMENSIONS		6/32	8/32	10/24	10/32	1/4	5/16	3/8
		min. - max.	min. - max.	min. - max.	min. - max.	min. - max.	min. - max.	min. - max.
HEAD	A	0.39 - 0.42	0.43 - 0.45	0.53 - 0.57	0.53 - 0.57	0.63 - 0.67	0.84 - 0.88	1.00 - 1.05
	B	0.27 - 0.31	0.29 - 0.32	0.41 - 0.44	0.41 - 0.44	0.53 - 0.57	0.65 - 0.69	0.73 - 0.77
	C	0.06 - 0.09	0.09 - 0.12	0.11 - 0.13	0.11 - 0.13	0.15 - 0.17	0.17 - 0.20	0.22 - 0.25
	C1	0.02 - 0.04	0.04 - 0.06	0.05 - 0.07	0.05 - 0.07	0.06 - 0.08	0.08 - 0.10	0.10 - 0.12
SHANK	L	3/8" - 1"	3/8" - 1"	3/8" - 1" 1/2	3/8" - 1" 1/2	3/8" - 2"	1/2" - 3"	5/8" - 3"

MATERIALS

Steel (Fe) – Brass (OT 63)

TREATMENT

Only on steel White galvanised

TOLERANCES

UNC - UNF thread class 2A

LENGHT L	$\leq 1" \frac{1}{4}$	$> 1" \frac{1}{4} \leq 3"$	$> 3"$
	$\pm 0.03"$	$\pm 0.06"$	$\pm 0.07"$

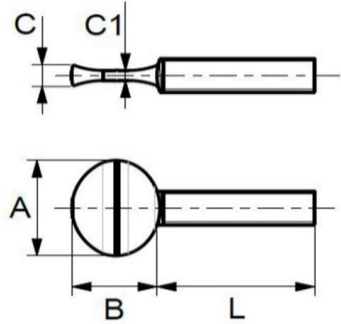
THREAD

On request: partial threading

SIZE

Unquoted parts in this document are not binding. GAMMA Officine Meccaniche s.r.l reserves the possibility to change, modify or eliminate products or dimensions without prior notice.

THUMB SCREWS COLD FORMED INCH - STAINLESS STEEL 304



DIMENSIONS		8/32	10/24	10/32	1/4	5/16	3/8
		min. - max.	min. - max.	min. - max.	min. - max.	min. - max.	min. - max.
HEAD	A	0.45 - 0.53	0.55 - 0.63	0.55 - 0.63	0.68 - 0.77	0.86 - 0.95	1.06 - 1.14
	B	0.30 - 0.36	0.44 - 0.50	0.44 - 0.50	0.52 - 0.58	0.67 - 0.75	0.80 - 0.88
	C	0.06 - 0.09	0.07 - 0.10	0.07 - 0.10	0.10 - 0.13	0.16 - 0.19	0.18 - 0.22
	C1	0.04 - 0.06	0.05 - 0.08	0.05 - 0.08	0.06 - 0.08	0.09 - 0.12	0.10 - 0.13
SHANK	L	3/8" - 1"	3/8" - 1" 1/2	3/8" - 1" 1/2	3/8" - 2"	1/2" - 3"	5/8" - 3"

MATERIALS

Stainless Steel 304

TOLERANCES

UNC - UNF thread class 2A

LENGHT L

$\leq 1" 1/4$
 $\pm 0.03"$

$> 1" 1/4 \leq 3"$
 $\pm 0.06"$

$> 3"$
 $\pm 0.07"$

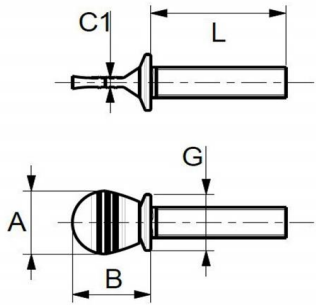
THREAD

On request: partial threading

SIZE

Unquoted parts in this document are not binding. GAMMA Officine Meccaniche s.r.l reserves the possibility to change, modify or eliminate products or dimensions without prior notice.

SHOULDERED THUMB SCREWS COLD FORMED - METRIC



DIMENSIONS		M4	M5	M6	M8	M10
		min. - max.	min. - max.	min. - max.	min. - max.	min. - max.
HEAD	A	7.5 - 9.5	9.0 - 11.0	10.9 - 13.3	13.4 - 15.8	16.5 - 19.5
	B	9.0 - 11.0	11.5 - 13.5	13.3 - 15.7	17.3 - 19.7	21.0 - 24.0
	G	6.6 - 7.4	7.9 - 8.7	10.4 - 11.6	13.9 - 15.1	17.4 - 18.6
	C1	0.5 - 1.1	0.7 - 1.3	1.4 - 2.2	1.6 - 2.4	1.8 - 2.6
SHANK	L	10.0 - 30.0	10.0 - 40.0	10.0 - 50.0	12.0 - 70.0	15.0 - 80.0

MATERIALS

Steel (Fe) – Brass (OT 63) – Stainless Steel 304 – Stainless Steel 316

TREATMENT

Only on steel White galvanised - other treatments on request

TOLERANCES

Metric thread class 6g

LENGHT L

< 30 mm
± 0.8 mm

> 30 mm ≤ 80 mm
± 1.5 mm

> 80 mm
± 1.75 mm

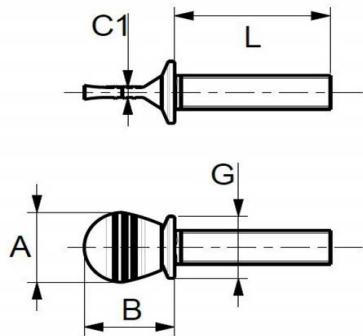
THREAD

On request: partial threading - lengths out of list.

SIZE

Unquoted parts in this document are not binding. GAMMA Officine Meccaniche s.r.l reserves the possibility to change, modify or eliminate products or dimensions without prior notice.

SHOULDERED THUMB SCREWS COLD FORMED - INCH



DIMENSIONS		6/32	8/32	10/24	10/32	1/4	5/16	3/8
		min. - max.	min. - max.	min. - max.	min. - max.	min. - max.	min. - max.	min. - max.
HEAD	A	0.23 - 0.31	0.29 - 0.37	0.35 - 0.43	0.35 - 0.43	0.43 - 0.52	0.52 - 0.62	0.65 - 0.76
	B	0.26 - 0.34	0.35 - 0.43	0.45 - 0.53	0.45 - 0.53	0.52 - 0.62	0.68 - 0.77	0.83 - 0.95
	G	0.22 - 0.25	0.26 - 0.29	0.31 - 0.34	0.31 - 0.34	0.41 - 0.46	0.55 - 0.60	0.68 - 0.73
	C1	0.02 - 0.04	0.02 - 0.04	0.03 - 0.05	0.03 - 0.05	0.05 - 0.08	0.06 - 0.09	0.07 - 0.10
SHANK	L	3/8" - 1"	3/8" - 1"	3/8" - 1" 1/2	3/8" - 1" 1/2	3/8" - 2"	1/2" - 3"	5/8" - 3"

MATERIALS

Steel (Fe) – Brass (OT 63) – Stainless Steel 304 – Stainless Steel 316

TREATMENT

Only on steel White galvanised - other treatments on request

TOLERANCES

UNC - UNF thread class 2A

LENGHT L	$\leq 1" \frac{1}{4}$	$> 1" \frac{1}{4} \leq 3"$	$> 3"$
		$\pm 0.03"$	$\pm 0.06"$

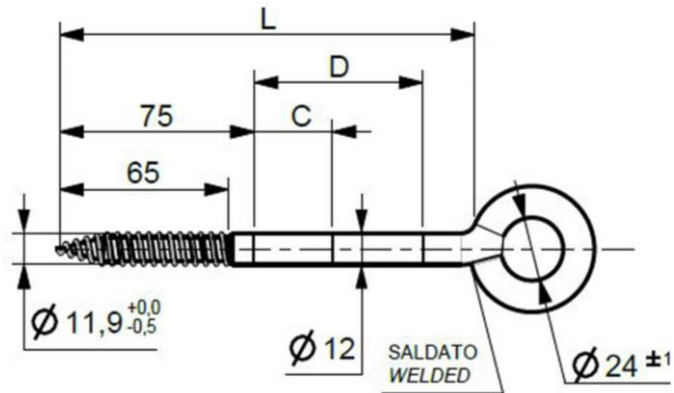
THREAD

On request: partial threading - lengths out of list.

SIZE

Unquoted parts in this document are not binding. GAMMA Officine Meccaniche s.r.l reserves the possibility to change, modify or eliminate products or dimensions without prior notice.

EYEBOLTS - WELDED EYE Ø 24 SPECIAL THREAD SUITABLE FOR NYLON EXPANDING PLUGS



Ø	L	C	D	Kg/1000 pc	Mechanical Features
12	95	/	/	151,0	WELDING BREAKING LOAD 3100 KG
12	120	30.0	/	178,0	
12	160	30.0	65.0	21,6	
12	190	30.0	65.0	242,0	
12	230	30.0	65.0	276,0	
12	300	30.0	65.0	337,0	
12	350	30.0	65.0	380,0	
12	400	30.0	65.0	423,0	
12	450	30.0	65.0	466,0	
12	500	30.0	65.0	509,0	

MATERIALS

Steel (Fe)

TREATMENT

White galvanised

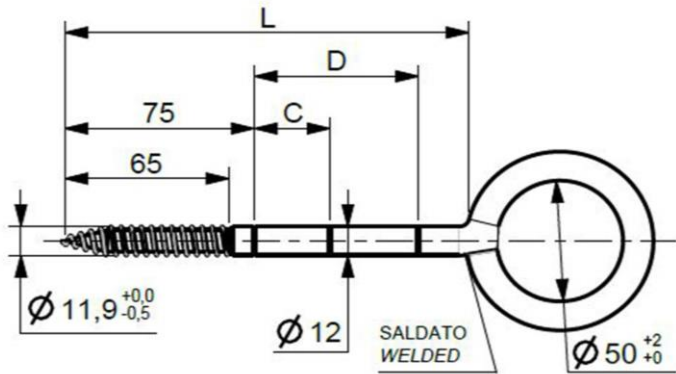
TOLERANCES

Special thread suitable for nylon expanding plugs

SIZE

Unquoted parts in this document are not binding. GAMMA Officine Meccaniche s.r.l reserves the possibility to change, modify or eliminate products or dimensions without prior notice.

EYEBOLTS - WELDED EYE Ø 50 SPECIAL THREAD SUITABLE FOR NYLON EXPANDING PLUGS



Ø	L	C	D	Kg/1000 pc	Mechanical Features
12	120	30,0	/	255,0	WELDING BREAKING LOAD 2100 KG
12	140	30,0	/	270,0	
12	160	30,0	65.0	285,0	
12	200	30,0	65.0	320,0	
12	240	30,0	65.0	335,0	
12	300	30,0	65.0	380,0	
12	350	30,0	65.0	418,0	
12	400	30,0	65.0	455,0	
12	450	30,0	65.0	493,0	
12	500	30,0	65.0	530,0	

MATERIALS

Steel (Fe)

TREATMENT

White galvanised

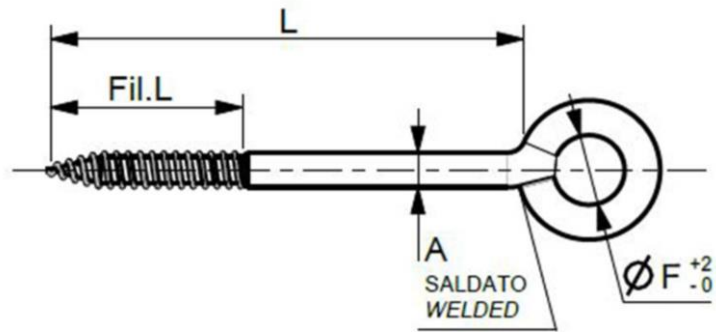
TOLERANCES

Special thread suitable for nylon expanding plugs

SIZE

Unquoted parts in this document are not binding. GAMMA Officine Meccaniche s.r.l reserves the possibility to change, modify or eliminate products or dimensions without prior notice.

EYEBOLTS - WELDED EYE - Ø 22-30 SPECIAL THREAD SUITABLE FOR NYLON EXPANDING PLUGS



Ø	L	FIL. L	A	F	Kg/1000 pc	Mechanical Features
8	80	45,0	8,0	22,0	59,0	WELDING BREAKING LOAD 1700 KG
8	100	45,0	8,0	22,0	65,8	
8	120	45,0	8,0	22,0	73,5	
10	160	65,0	10,0	30,0	155,3	WELDING BREAKING LOAD 2400 KG

MATERIALS

Steel (Fe)

TREATMENT

White galvanised

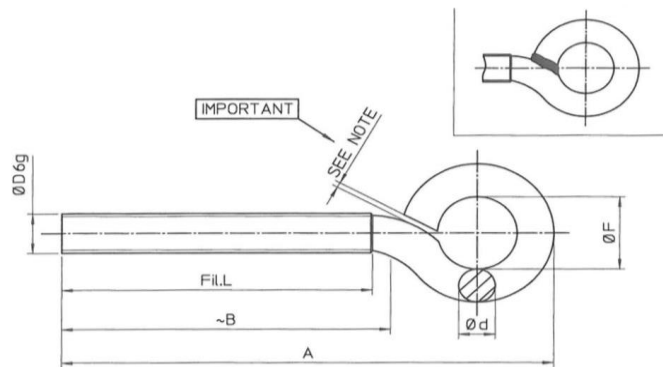
TOLERANCES

Special thread suitable for nylon expanding plugs

SIZE

Unquoted parts in this document are not binding. GAMMA Officine Meccaniche s.r.l reserves the possibility to change, modify or eliminate products or dimensions without prior notice.

EYEBOLTS - WELDED EYE Ø24 METRIC THREAD



Ø D	A	B	FIL.L	Ø F	Ø d	Kg x 1000 pc	Mechanical Features
M10	172	130	125	24	8,9	1378,7	WELDING BREAKING LOAD 2100 KG
M10	152	110	105	24	8,9	104,7	
M10	122	80	75	24	8,9	88,7	

MATERIALS

Steel (Fe)

TREATMENT

White galvanised

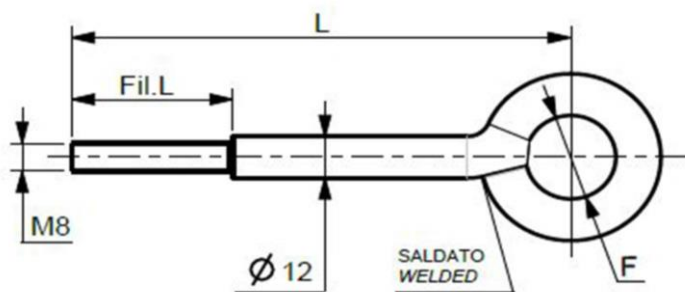
TOLERANCES

Metric thread class 6g

SIZE

Unquoted parts in this document are not binding. GAMMA Officine Meccaniche s.r.l reserves the possibility to change, modify or eliminate products or dimensions without prior notice.

EYEBOLTS - WELDED EYE Ø 24 METRIC THREAD



Ø	L	FIL. L	F		Kg/1000 pc	Mechanical Features
			min.	max.		
12	135	43,0	23.0	25.0	184,0	WELDING TENSILE STRENGTH 3100 KG
12	160	43,0	23.0	25.0	204,0	
12	180	43,0	23.0	25.0	222,0	

MATERIALS

Steel (Fe)

TREATMENT

White galvanised

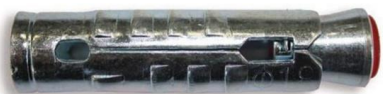
TOLERANCES

Metric thread class 6g

SIZE

Unquoted parts in this document are not binding. GAMMA Officine Meccaniche s.r.l reserves the possibility to change, modify or eliminate products or dimensions without prior notice.

EXPANDING - STEEL METRIC THREAD (SPARE PART)



Ø	L	Thread	Kg/1000 pc
12	51	M8	15,4

MATERIALS

Steel (Fe)

TREATMENT

White galvanised

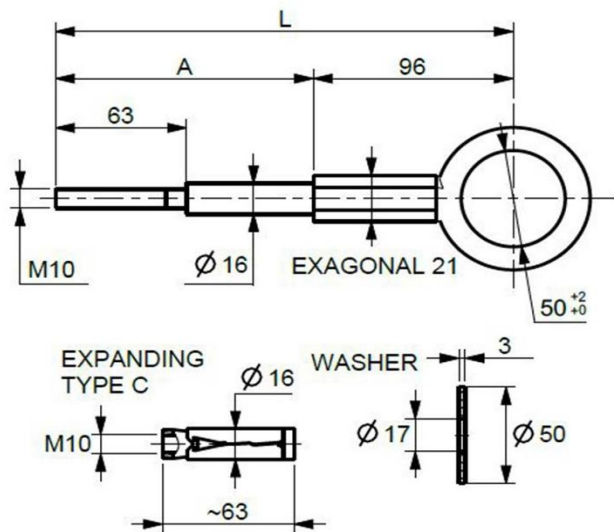
TOLERANCES

Metric thread class 6G

SIZE

Unquoted parts in this document are not binding. GAMMA Officine Meccaniche s.r.l reserves the possibility to change, modify or eliminate products or dimensions without prior notice.

EYEBOLTS - WELDED EYE Ø 50 HEXAGONAL BODY - MALE - METRIC THREAD



DESCRIPTION	NOTE	A	L	Kg/1000 pc
10/220	Eye	113.0	209.0	465,0
10/270	Eye	167.0	263.0	555,0
M10 X 63	Expanding type B M10	-	-	30,5
Ø 17/50	Washer	-	-	40,9

MATERIALS

Steel (Fe)

TREATMENT

White galvanised

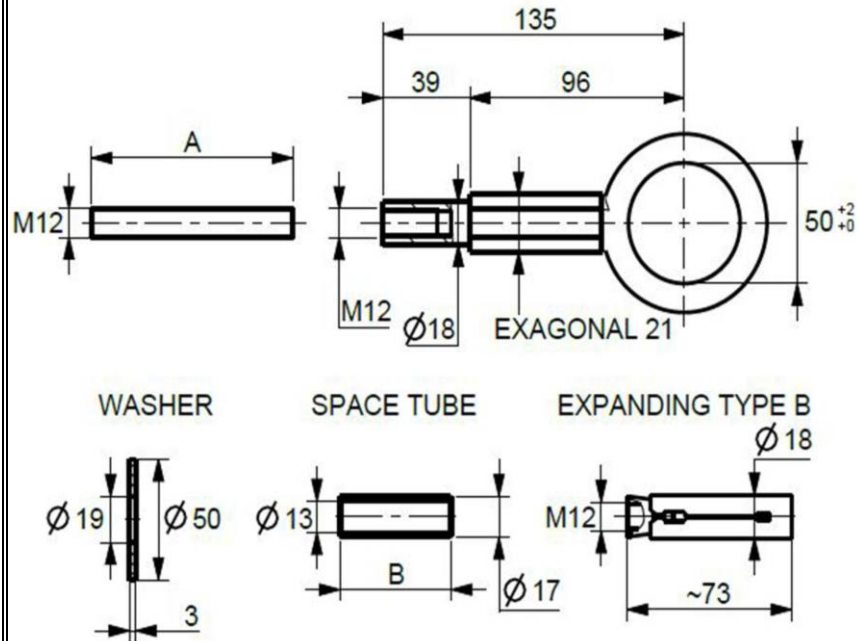
TOLERANCES

Metric thread class 6G and 6g

SIZE

Unquoted parts in this document are not binding. GAMMA Officine Meccaniche s.r.l reserves the possibility to change, modify or eliminate products or dimensions without prior notice.

EYEBOLTS - WELDED EYE Ø 50 HEXAGONAL BODY - FEMALE - METRIC THREAD



DESCRIPTION	NOTES	A	B	Kg/1000 pc
12/220	Complete: body + bar 12x90 Expanding type B M12 + Washer M12 +	90.0	-	565,0
12/270	Complete: body + bar M12x140+ Space tube + Expanding type B M12 + Washer	140.0	50.0	654,0
12 /220/270	Only hexagonal body	-	-	421,0
M 12 X 90	Thread bar M12x90	90.0	-	63,5
M 12 X 140	Thread bar M12x140	140.0	-	98,8
M 12 X 73	Expanding type B M12	-	-	41,0
Ø 19 / 50	Washer for M12	-	-	39,5
Ø 13/17 X 50	Space tube	-	50.0	37,0

MATERIALS

Steel (Fe)

TREATMENT

White galvanised

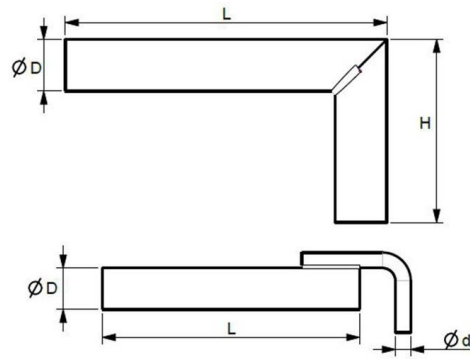
TOLERANCES

Metric thread class 6G and 6g

SIZE

Unquoted parts in this document are not binding. GAMMA Officine Meccaniche s.r.l reserves the possibility to change, modify or eliminate products or dimensions without prior notice.

EXTENTION FOR SCAFFOLDING



PRO1

PRO2

DESCRIPTION	L	D	H	d	Kg/1000 pc
PRO 1	480	480	170.0	-	1625
PRO 2	480	480	-	18.0	1675
PRO 1	350	480	170.0	-	1275
PRO 2	350	480	-	18.0	1295
PRO 1	300	480	170.0	-	1140
PRO 2	300	480	-	18.0	1150

MATERIALS

Steel (Fe)

TREATMENT

White galvanised

SIZE

Unquoted parts in this document are not binding. GAMMA Officine Meccaniche s.r.l reserves the possibility to change, modify or eliminate products or dimensions without prior notice.

PLASTIC CAP (SPARE PART)



Ø	H	Kg/1000 pc
47,6	23,0	8,0

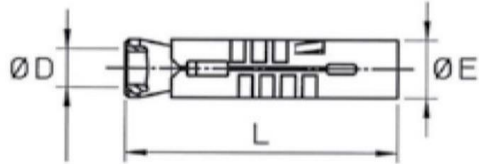
MATERIALS

Plastic

SIZE

Unquoted parts in this document are not binding. GAMMA Officine Meccaniche s.r.l reserves the possibility to change, modify or eliminate products or dimensions without prior notice.

PLUG TYPE B - METRIC THREAD



Ø D	L	Ø E	Kg/1000 pc
M 6	45,0	10,0	9,4
M 8	51,0	12,0	15,4
M 10	60,0	15,0	29,0
M 12	73,0	18,0	41,0

MATERIALS

Steel (Fe)

TREATMENT

White galvanised

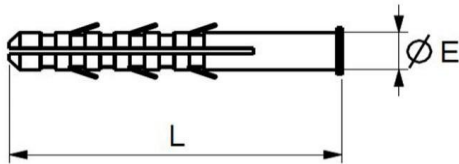
TOLERANCES

Metric thread class 6G

SIZE

Unquoted parts in this document are not binding. GAMMA Officine Meccaniche s.r.l reserves the possibility to change, modify or eliminate products or dimensions without prior notice.

PLUG NYLON



DESCRIPTION	Ø E	L	Kg/1000 pc
14 X 100	14,0	100,0	8,30

MATERIALS

Nylon

SIZE

Unquoted parts in this document are not binding. GAMMA Officine Meccaniche s.r.l reserves the possibility to change, modify or eliminate products or dimensions without prior notice.